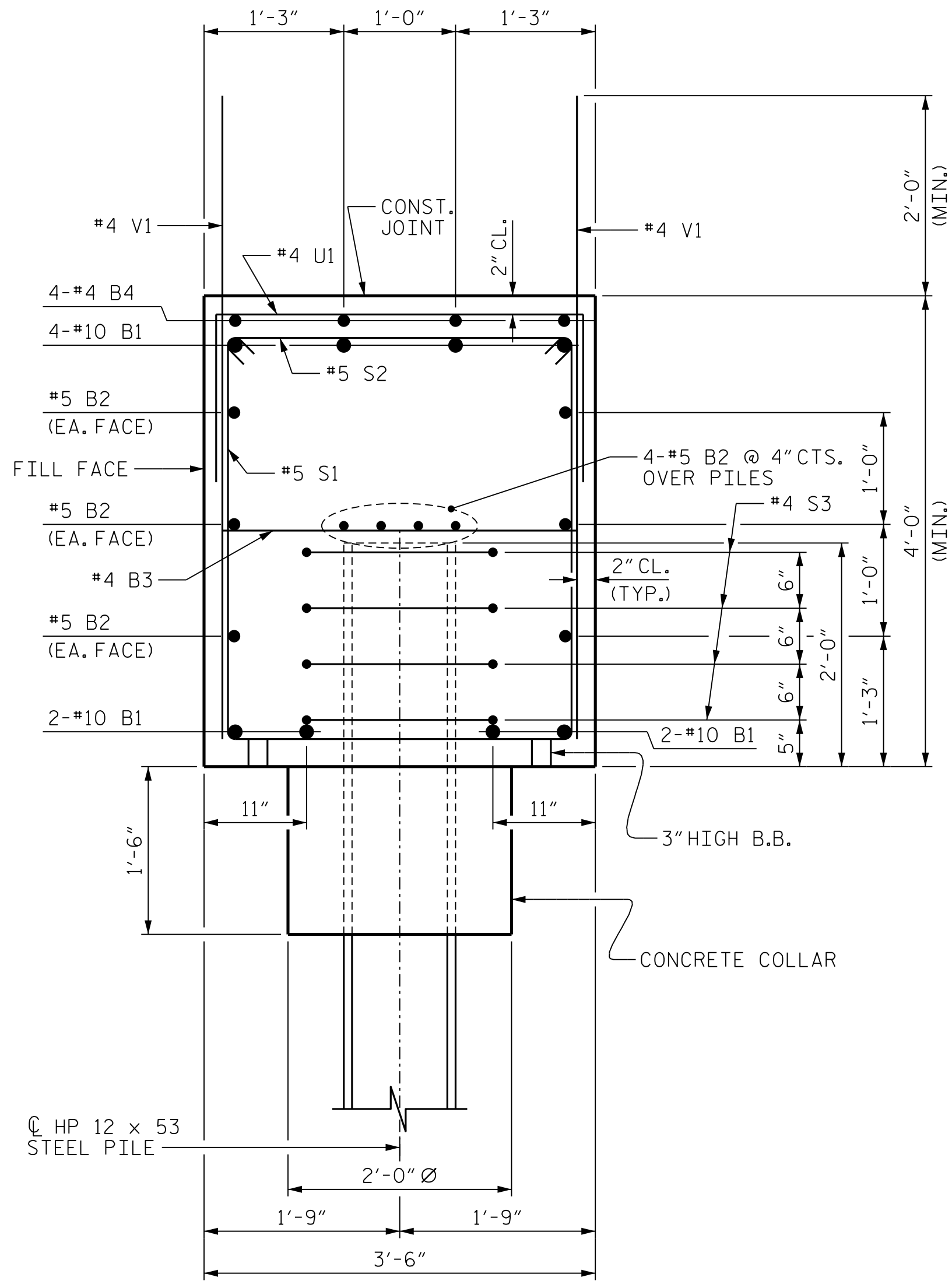
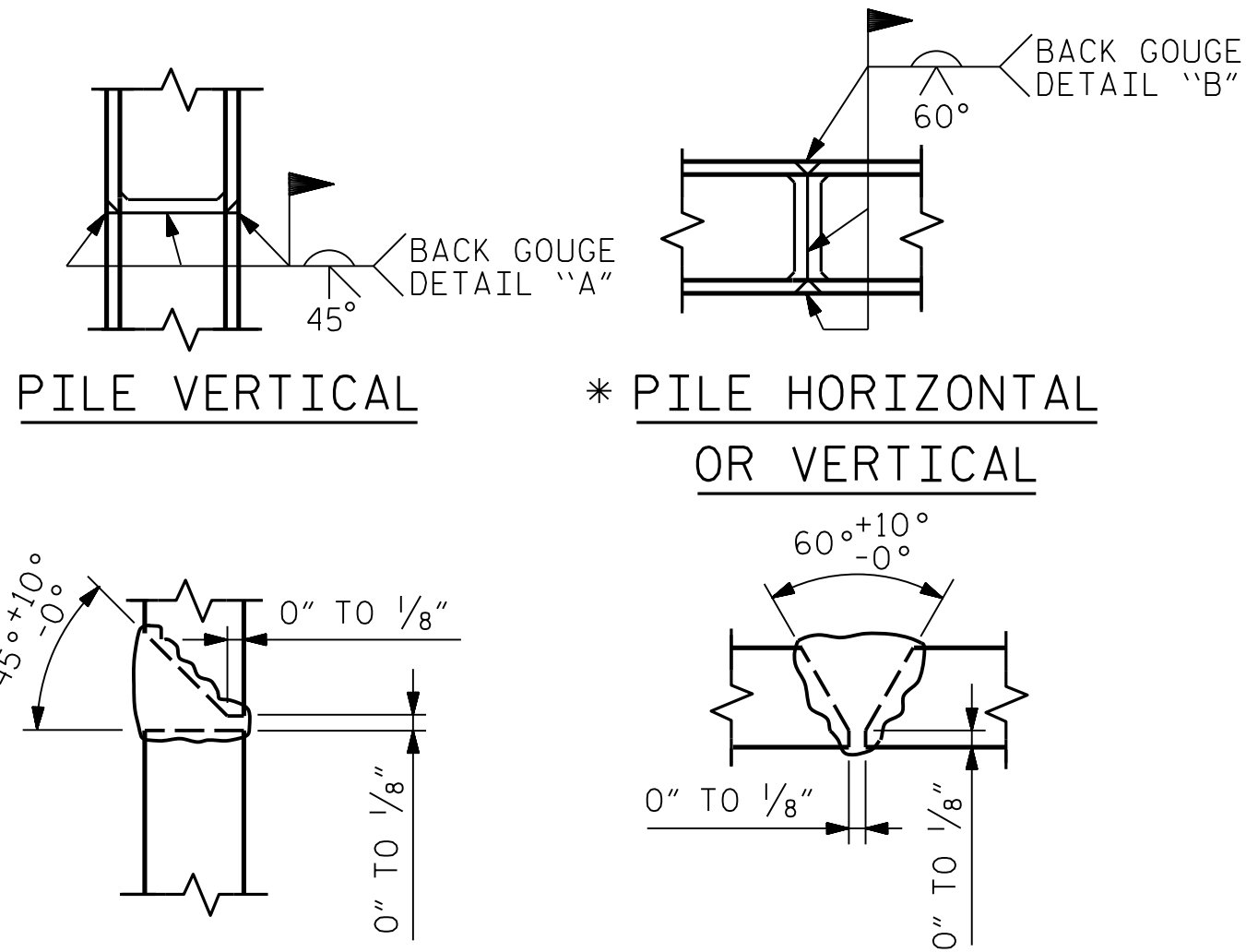


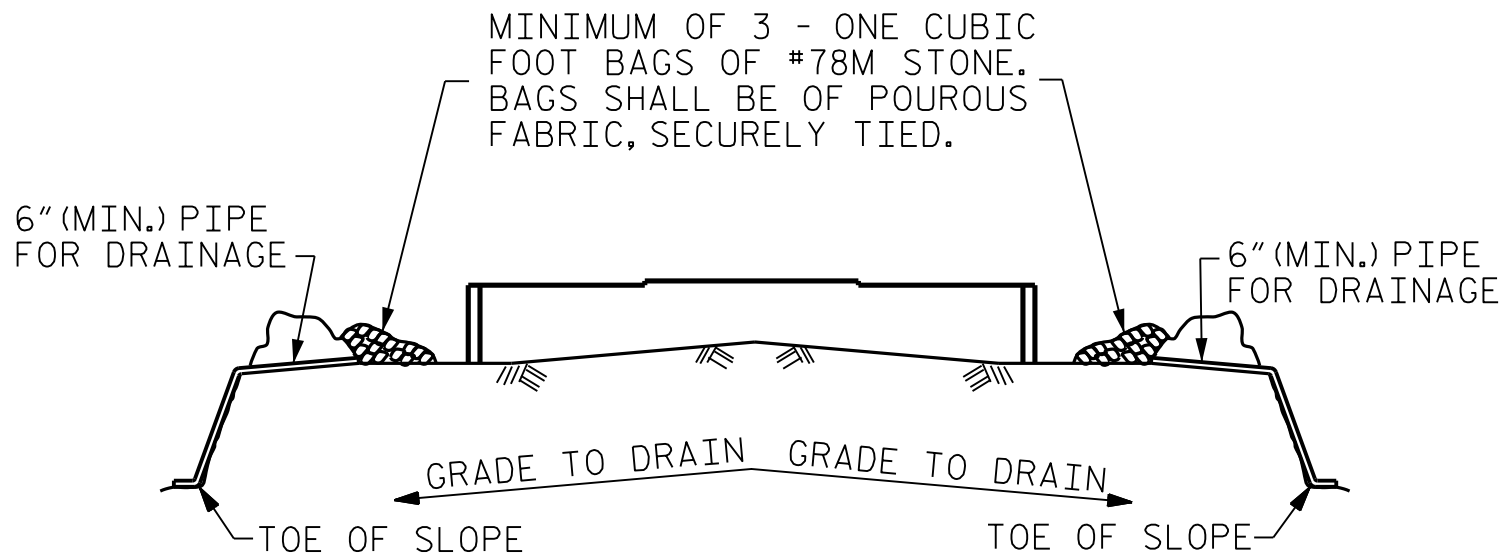
5/7/2025 7:24:35 PM User: blanning
Filename: N:\NC Bridges\W3001.02_Polk 29\BP14-R041\Structures\401_041_BP14-R041_SMU-EIC-740029.dgn



SECTION A-A



PILE SPLICING DETAILS
* POSITION OF PILE DURING WELDING.



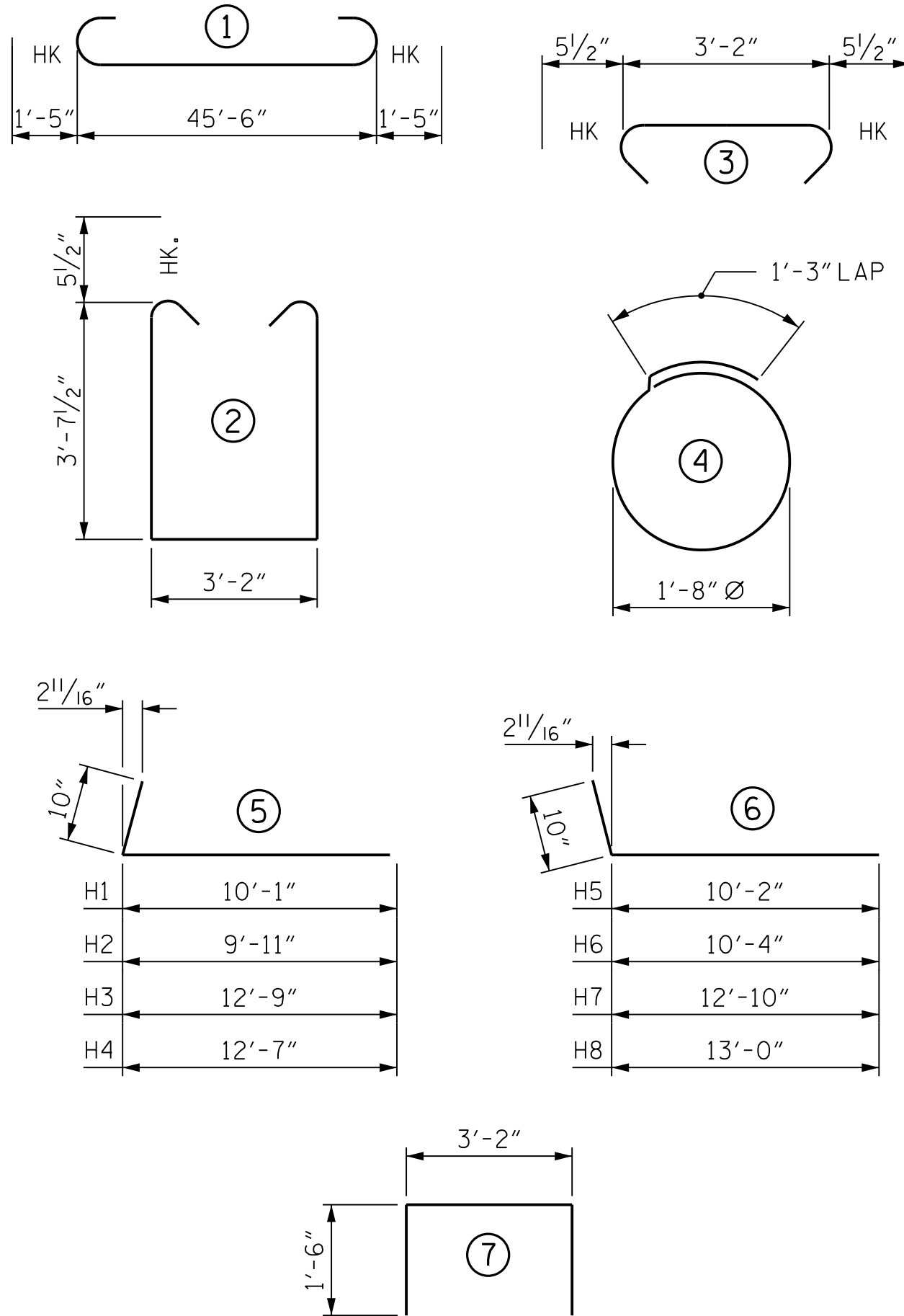
BAGGED STONE AND PIPE SHALL BE PLACED IMMEDIATELY AFTER COMPLETION OF END BENT EXCAVATION. PIPE MAY BE EITHER CONCRETE, CORRUGATED STEEL, CORRUGATED ALUMINUM ALLOY, OR CORRUGATED PLASTIC. PERFORATED PIPE WILL NOT BE ALLOWED.

BAGGED STONE SHALL REMAIN IN PLACE UNTIL THE ENGINEER DIRECTS THAT IT BE REMOVED. THE CONTRACTOR SHALL REMOVE AND DISPOSE OF SILT ACCUMULATIONS AT BAGGED STONE WHEN SO DIRECTED BY THE ENGINEER. BAGS SHALL BE REMOVED AND REPLACED WHENEVER THE ENGINEER DETERMINES THAT THEY HAVE DETERIORATED AND LOST THEIR EFFECTIVENESS.

NO SEPARATE PAYMENT WILL BE MADE FOR THIS WORK AND THE ENTIRE COST OF THIS WORK SHALL BE INCLUDED IN THE UNIT CONTRACT PRICE BID FOR THE SEVERAL PAY ITEMS.

TEMPORARY DRAINAGE AT END BENT

BAR TYPES



ALL BAR DIMENSIONS ARE OUT TO OUT.

BILL OF MATERIAL

END BENT 1

BAR	NO.	SIZE	TYPE	LENGTH	WEIGHT
B1	8	#10	1	48'-4"	1664
B2	10	#5	STR	45'-6"	475
B3	12	#4	STR	3'-2"	25
B4	4	#4	STR	12'-11"	35
H1	6	#5	5	10'-11"	68
H2	6	#5	5	10'-9"	67
H3	6	#5	5	13'-7"	85
H4	6	#5	5	13'-5"	84
H5	6	#5	6	11'-0"	69
H6	6	#5	6	11'-2"	70
H7	6	#5	6	13'-8"	86
H8	6	#5	6	13'-10"	87
K1	24	#4	STR	3'-2"	51
S1	48	#5	2	11'-4"	567
S2	48	#5	3	4'-1"	204
S3	20	#4	4	6'-6"	87
U1	9	#4	7	6'-2"	37
V1	72	#4	STR	6'-1"	293
V2	60	#4	STR	8'-0"	321

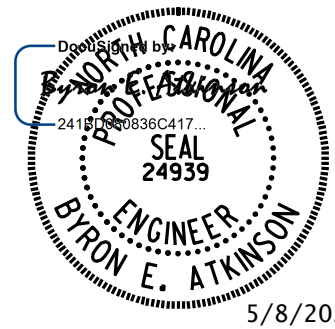
REINFORCING STEEL 4375 LBS.

CLASS A CONCRETE BREAKDOWN

POUR #1 (CAP, COLLARS & LOWER PART OF WINGS)	28.0 C.Y.
POUR #2 (UPPER PART OF WINGS)	4.1 C.Y.
TOTAL	32.1 C.Y.

PROJECT NO. BP14.R041
POLK COUNTY
STATION: 20+97.50 -L-

SHEET 3 OF 3



**DOCUMENT NOT CONSIDERED FINAL
UNLESS ALL SIGNATURES COMPLETED**

MI ENGINEERING
1011 SCHAUB DRIVE, SUITE 100
RALEIGH, NC 27606
(919) 851-6606
FIRM PE NUMBER : P-0671

STATE OF NORTH CAROLINA
DEPARTMENT OF TRANSPORTATION
RALEIGH
SUBSTRUCTURE
END BENT 1
DETAILS AND
BILL OF MATERIAL

REVISIONS						SHEET NO. S-21 TOTAL SHEETS 29
NO.	BY:	DATE:	NO.	BY:	DATE:	
1			3			
2			4			

DRAWN BY : <u>B.E. LANNING</u>	DATE : <u>03/25</u>
CHECKED BY : <u>B.E. ATKINSON</u>	DATE : <u>03/25</u>
DESIGN ENGINEER OF RECORD : <u>B.E. ATKINSON</u>	DATE : <u>04/25</u>